

Warrington PCI Management



BUILDING
**ROYAL CENTRE 1055 WEST
 GEORGIA STREET
 VANCOUVER, B.C.**

UPDATED BY
 BROOKFIELD PROPERTIES CORPORATION

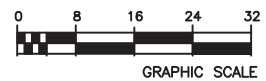
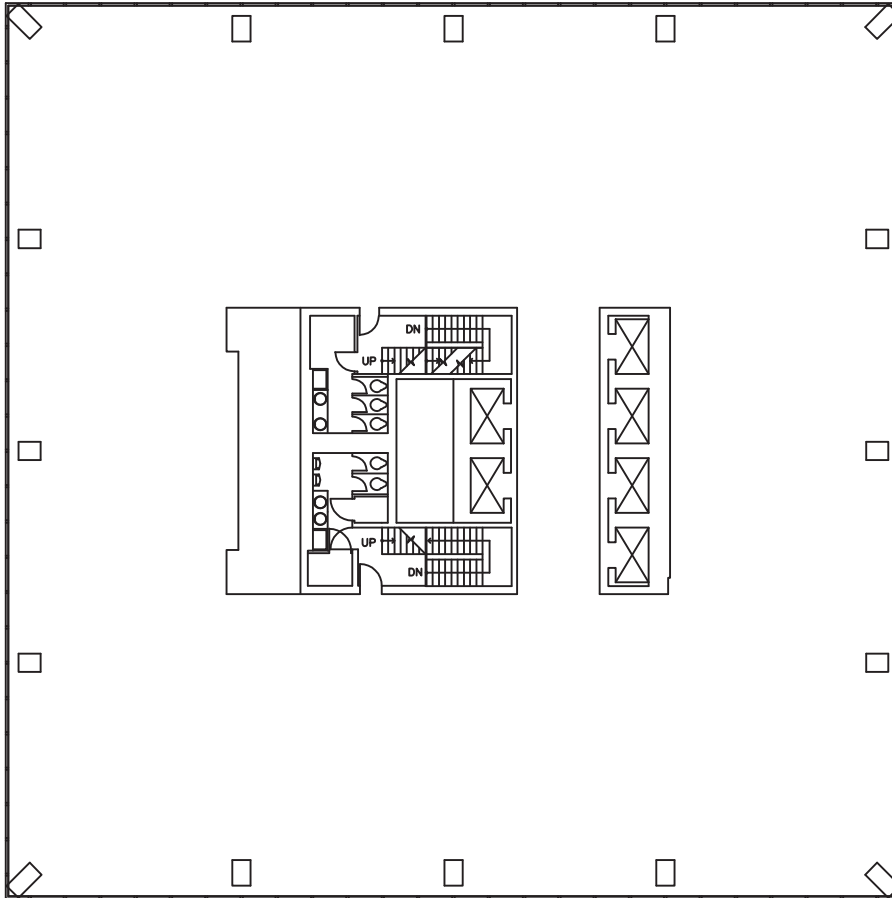
FLOOR AND AREA

Typical Floor 4-20

SCALE
AS NOTED

DATE
APRIL/1997

DWG#
A-20



Warrington PCI Management



BUILDING

ROYAL CENTRE 1055 WEST
GEORGIA STREET
VANCOUVER, B.C.

FLOOR AND AREA

Typical High Rise

UPDATED BY

BROOKFIELD PROPERTIES CORPORATION

SCALE

AS NOTED

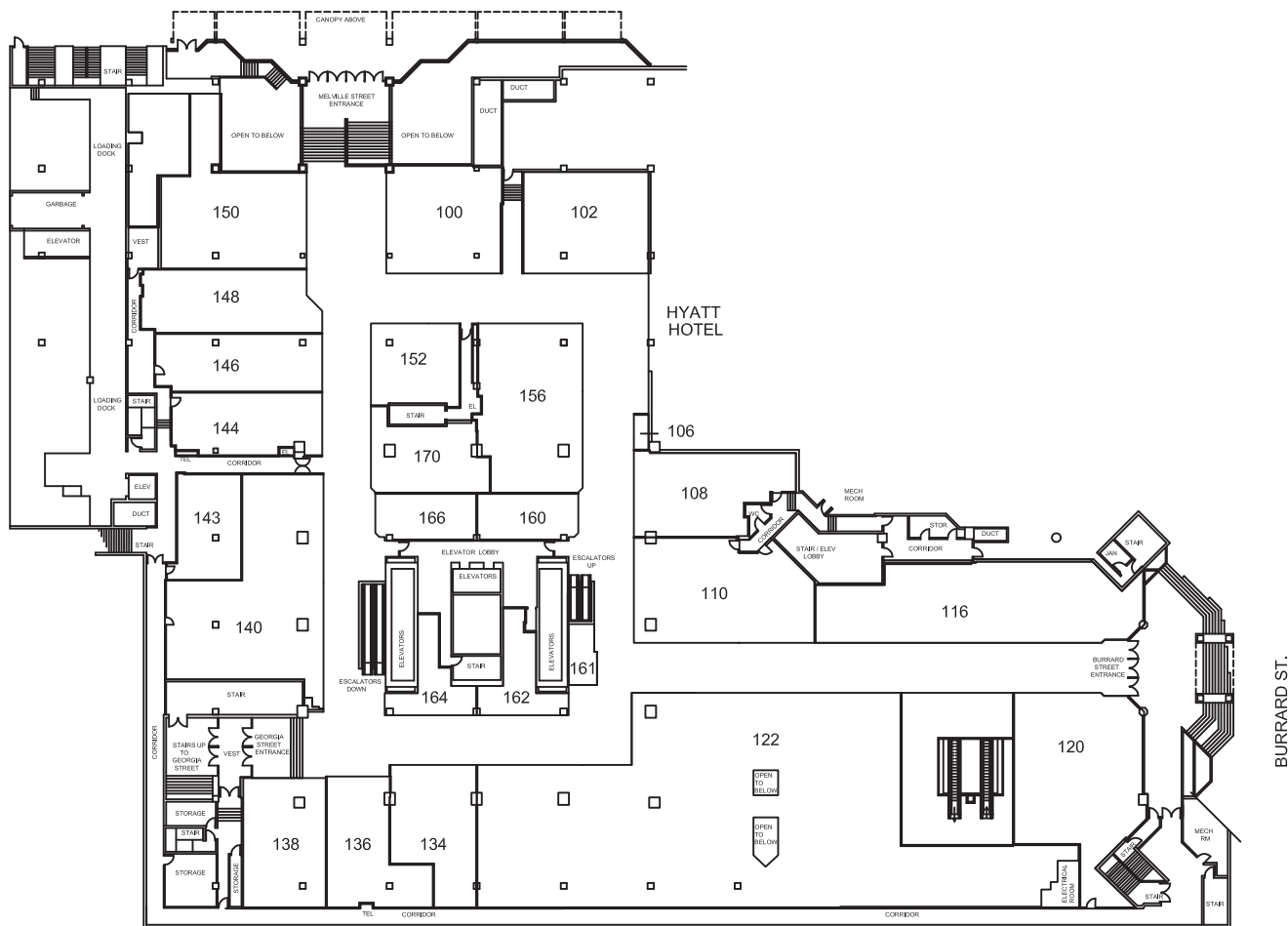
DATE

FEB/1999

DWG#

A-21

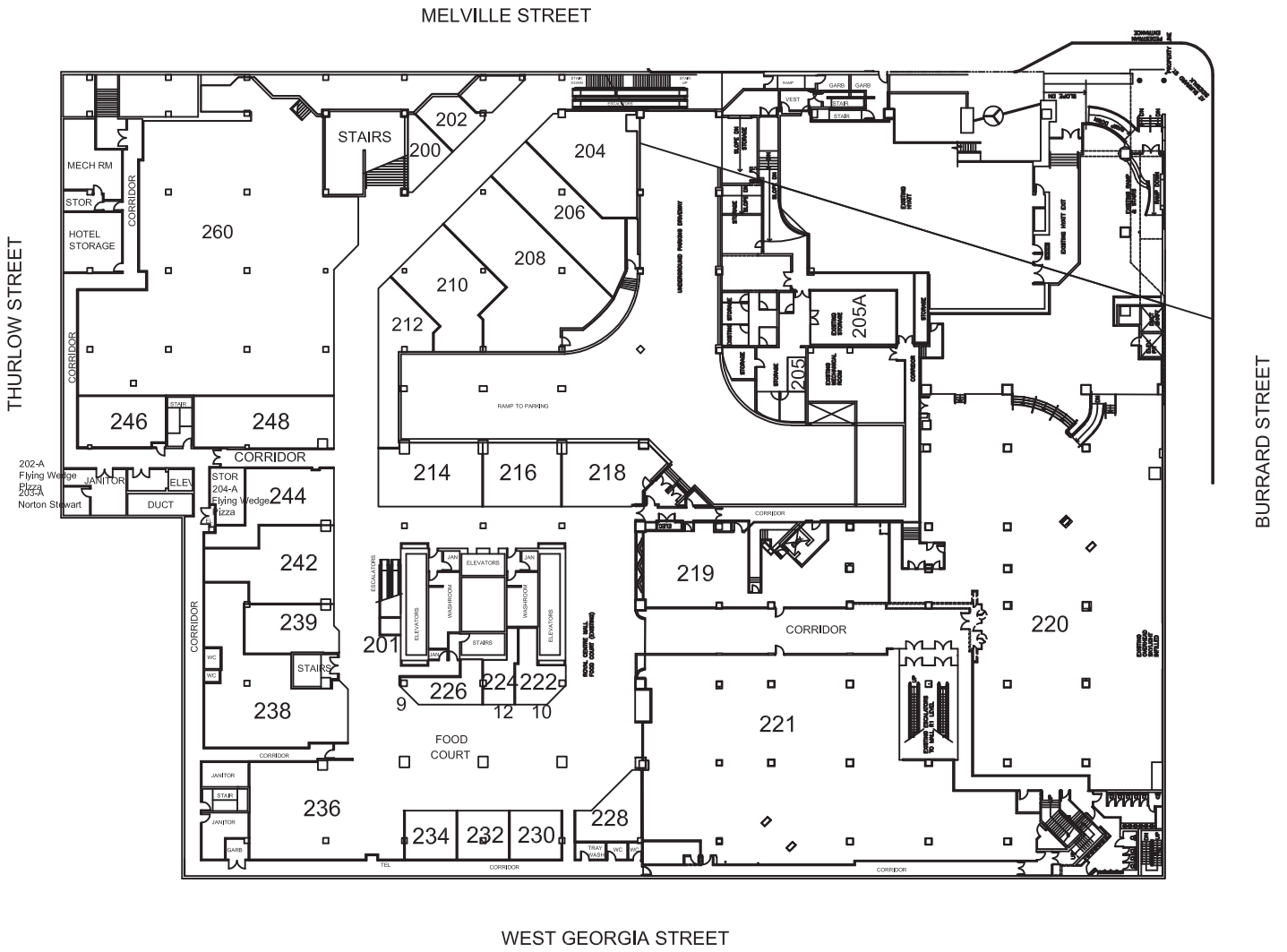
MELVILLE STREET



WEST GEORGIA ST.



	BUILDING ROYAL CENTRE 1055 WEST GEORGIA STREET VANCOUVER, B.C.	FLOOR AND AREA UPPER RETAIL		
	UPDATED BY BROOKFIELD PROPERTIES CORPORATION	SCALE AS NOTED	DATE MARCH 2006	DWG# A-RC-JL



Warrington PCI Management

BUILDING
ROYAL CENTRE 1055 WEST
GEORGIA STREET
VANCOUVER, B.C.

FLOOR AND AREA
LOWER RETAIL
SKYTRAIN CONNECTOR

UPDATED BY
LYON FLYNN & COLLINS

SCALE
AS NOTED

DATE
MAY 2004

DWG#
A-RC-LL

